

# ORACLE DATABASE 11G ORACLE WAREHOUSE BUILDER ERP/CRM CONNECTORS

## KEY FEATURES AND BENEFITS

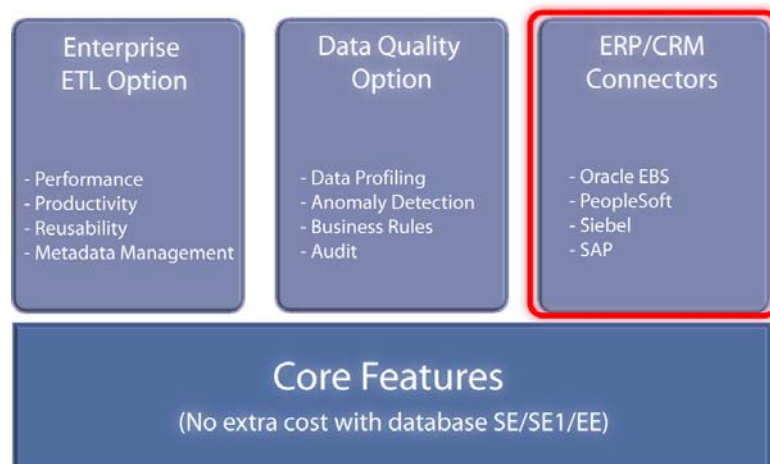
### WAREHOUSE BUILDER

- Providing extraction, transformation, and loading (ETL and E-LT are supported in a single tool)
- Consolidating data from disparate data sources, including ERP and CRM packaged applications
- Migrating data from legacy systems
- Data modeling of relational and dimensional structures
- Designing and managing corporate metadata
- Cleaning data to provide quality information
- Profiling and auditing data quality

*Oracle Warehouse Builder 11g Release 1 is a single, comprehensive tool for all aspects of data and metadata management. It provides data quality, data auditing, fully integrated relational and dimensional modeling, and full life cycle management of data and metadata.*

### ERP and CRM connectors

The ERP and CRM connectors for Warehouse Builder is one of the options that can be purchased with Oracle Warehouse Builder as part of the Enterprise Edition of Oracle Database 11g.



**Figure 1 Warehouse Builder Options**

This datasheet covers only the Connectors as shown in Figure 1.

### Connector for Oracle E-Business Suite

Warehouse Builder's eBusiness Suite connector is a solution that customers can choose to create a custom reporting or warehousing environment, besides existing pre-packaged solutions such as Daily Business Intelligence.

Warehouse Builder now natively understands the metadata in the eBusiness Suite and makes extracting from it much simpler and more effective. The extraction from the eBusiness Suite is a SQL based extraction mechanism

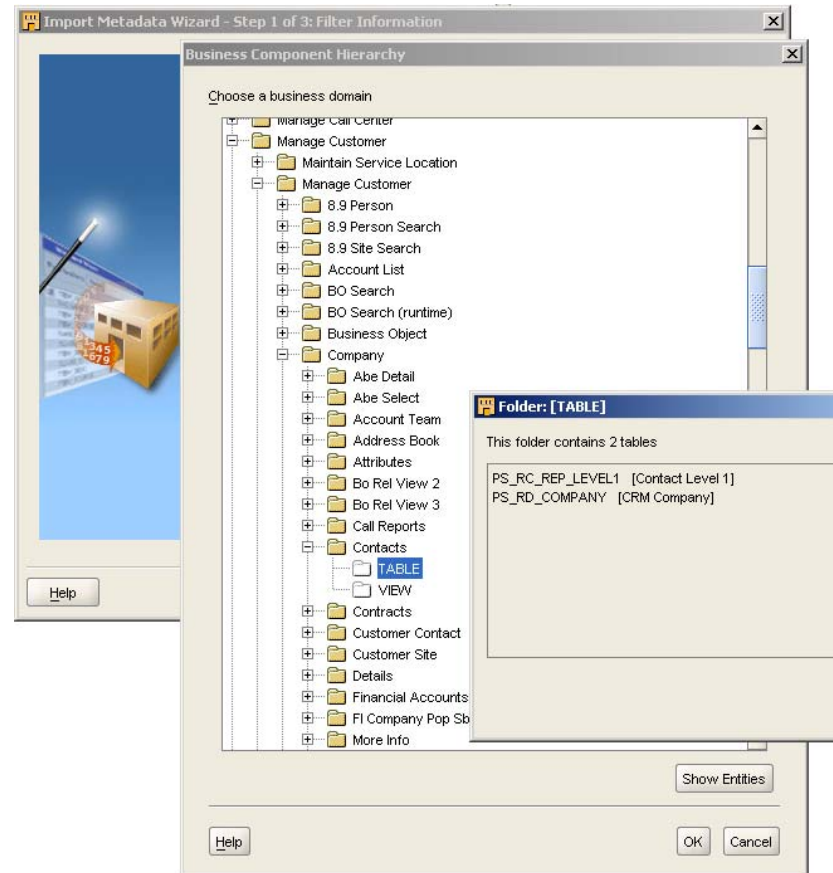
Another potent feature in the EBS connector is the seamless integration with the Concurrent Manager in the EBS product suite. This functionality uniquely enables

tight integration of Warehouse Builder processes in the generic EBS scheduling and job management framework.

### Connector for Oracle PeopleSoft

The PeopleSoft connector allows Warehouse Builder to natively understand the metadata structures of the PeopleSoft applications.

For example, within PeopleSoft CRM, we can drill down in the hierarchy to view the logical entity contacts, then we can drill into what makes up a contact. This is shown in Figure 2.



**Figure 2 Discover the actual tables making up a logical entity**

Once you have imported the metadata you can use all the facilities in Warehouse Builder to integrate this data using the SQL based extraction mechanisms.

### Connector for Oracle Siebel

The Siebel connector is very similar to both the EBS and the PeopleSoft connector. For Siebel, the connector understands the structures in the Siebel metadata and will give you the business view of these structures. As with the previously discussed connectors, the Siebel connector is a SQL based connector.

### Connector for SAP

The third connector for Warehouse Builder is the SAP R/3 connector, which allows

## ERP / CRM CONNECTORS

## KEY FEATURES AND BENEFITS:

- Specialized access for all package application families
- Advanced metadata import capabilities
- Business terms available for developers
- High performance batch loading
- SAP native access using ABAP

## RELATED PRODUCTS

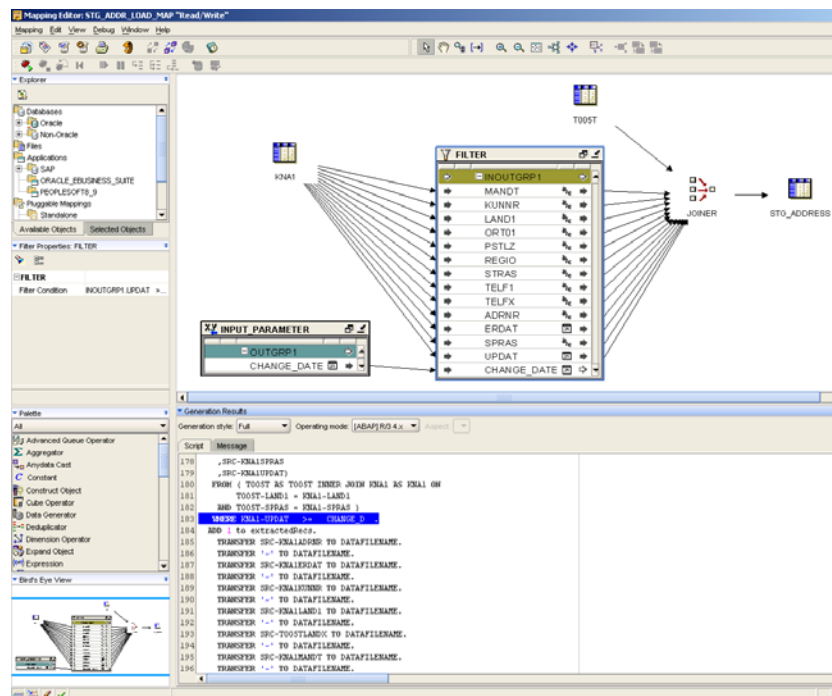
The following products are available from Oracle:

- Warehouse Builder Data Quality Option
- Warehouse Builder Enterprise ETL Option
- Oracle Database
- Oracle Partitioning
- Oracle OLAP
- Oracle Data Mining
- Oracle Gateways

you to natively understand the SAP business metadata. Warehouse Builder connects using RFC to the application server to collect the business metadata and links that to the table metadata. Warehouse Builder understand not only transparent tables, but also pool and cluster table structures.

Since SAP has a proprietary language, ABAP, to do batch extractions, the connector allows you to extract data using ABAP. Using ABAP means that you are using the native language in SAP for data manipulation.

However, instead of manually writing the code you now generate it from the Warehouse Builder mappings. This way Warehouse Builder allows you to work on transparent tables, pool and cluster tables giving you access to the entire R/3 system in an efficient and convenient manner.



**Figure 3 Parameterized ABAP code in Warehouse Builder**

Warehouse Builder allows SAP administrators to fully control the execution of the ABAP on the SAP system supporting such things as transporting ABAP from development to production.

Copyright 2007, Oracle. All Rights Reserved.

This document is provided for information purposes only, and the contents hereof are subject to change without notice. This document is not warranted to be error-free, nor is it subject to any other warranties or conditions, whether expressed orally or implied in law, including implied warranties and conditions of merchantability or fitness for a particular purpose. We specifically disclaim any liability with respect to this document, and no contractual obligations are formed either directly or indirectly by this document. This document may not be reproduced or transmitted in any form or by any means, electronic or mechanical, for any purpose, without our prior written permission.

Oracle, JD Edwards, PeopleSoft, and Siebel are registered trademarks of Oracle Corporation and/or its affiliates. Other names may be trademarks of their respective owners.